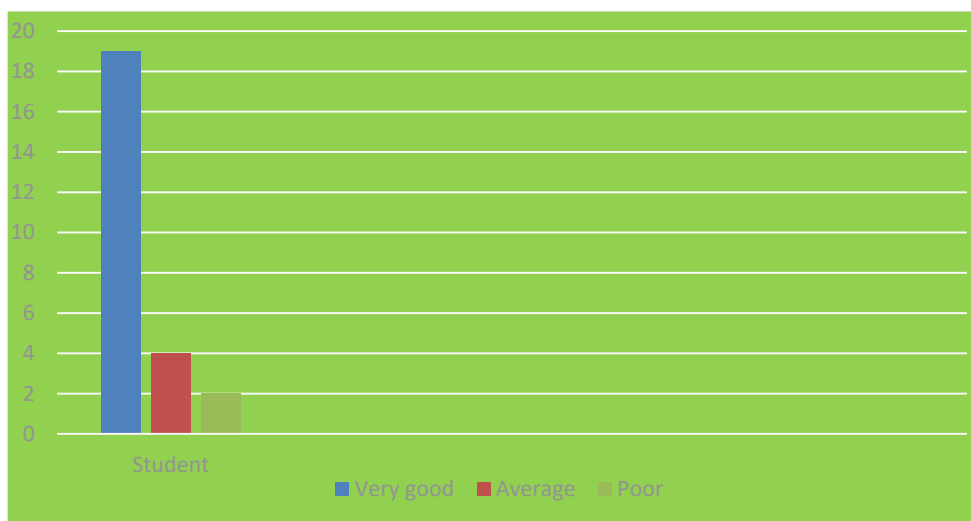


**Opportunities given/available for the overall development**

	<b>Student</b>
<b>Very good</b>	<b>19</b>
<b>Average</b>	<b>4</b>
<b>Poor</b>	<b>2</b>





# SACRED HEART COLLEGE (AUTONOMOUS)

Tirupattur – 635 601, Tamil Nadu, S.India

Resi : (04179) 220103

College : (04179) 220553

Fax : (04179) 226423

Ready for  
Everv Good Work

A Don Bosco Institution of Higher Education, Founded in 1951 \* Affiliated to Thiruvalluvar University, Vellore \* Autonomous since 1987

Accredited by NAAC (4<sup>th</sup> Cycle – under RAF) with CGPA of 3.31 / 4 at 'A+' Grade

## Curriculum Feedback PG – 2020 - 2021

### Curriculum Feedback by Faculty for M. Sc. Chemistry program

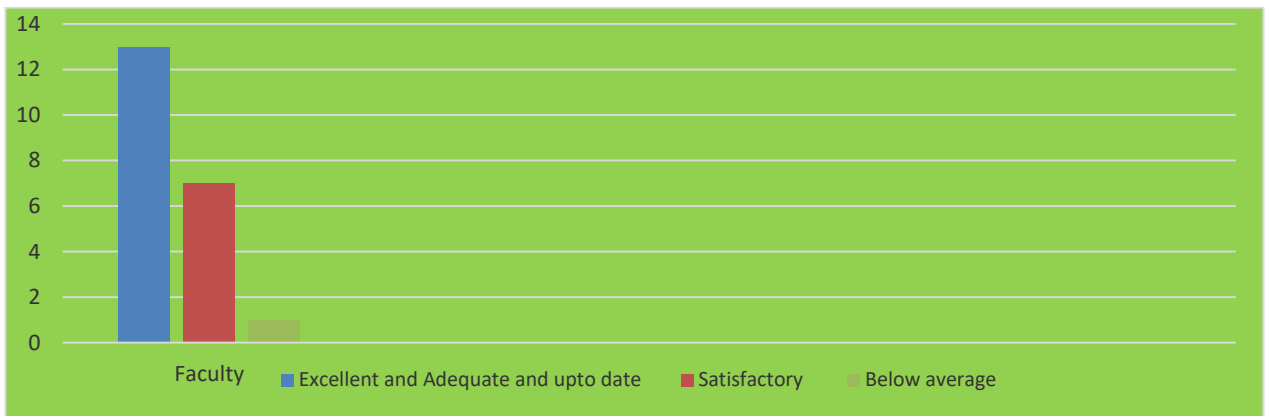
#### Courses (papers or subjects)

	Faculty
Excellent and Adequate and upto date	15
Satisfactory	6
Below average	3



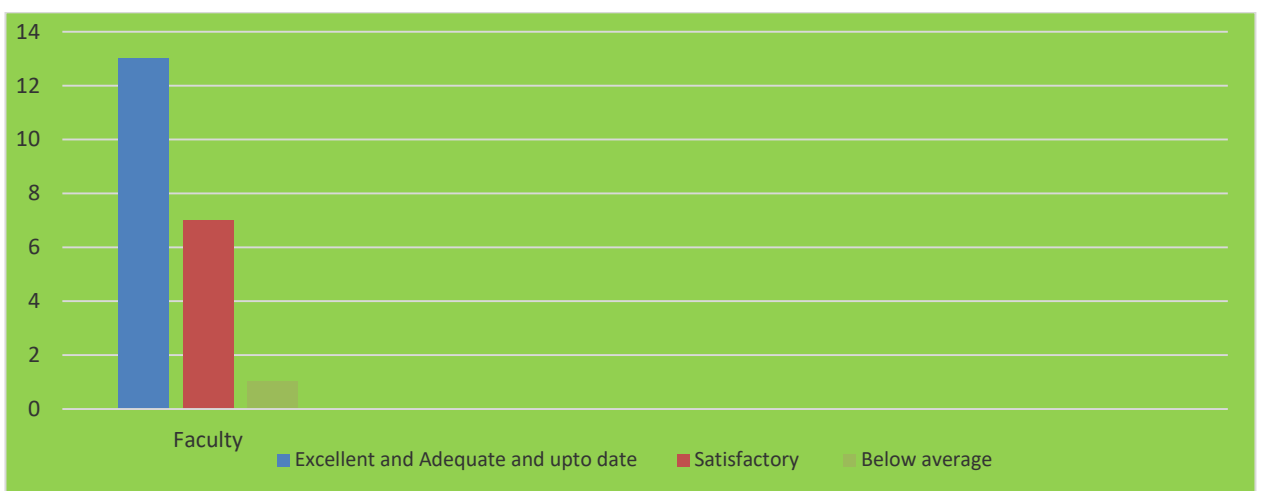
#### Content of the courses (papers or subjects)

	Faculty
Excellent and Adequate and upto date	13
Satisfactory	7
Below average	1



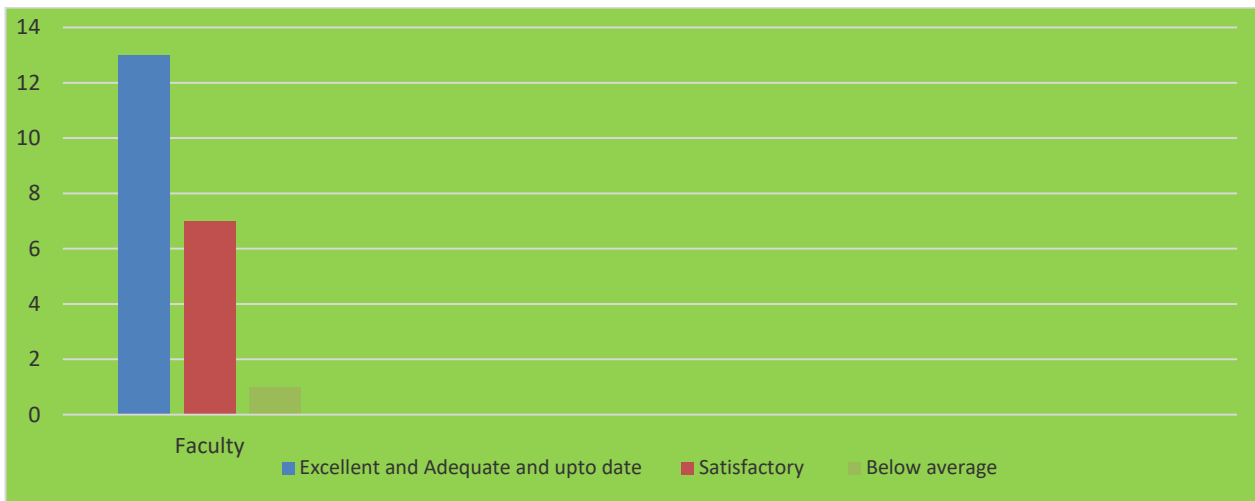
### Relevance of the courses

	Faculty
Highly relevant	12
Moderately relevant	9
Irrelevant	3



### Sequence of the courses in the program

	Faculty
High	11
Moderate	8
Low	2



**Inclusion of new /current topics in the curriculum**

	Faculty
More inclusion	13
Moderate	6
Low	3



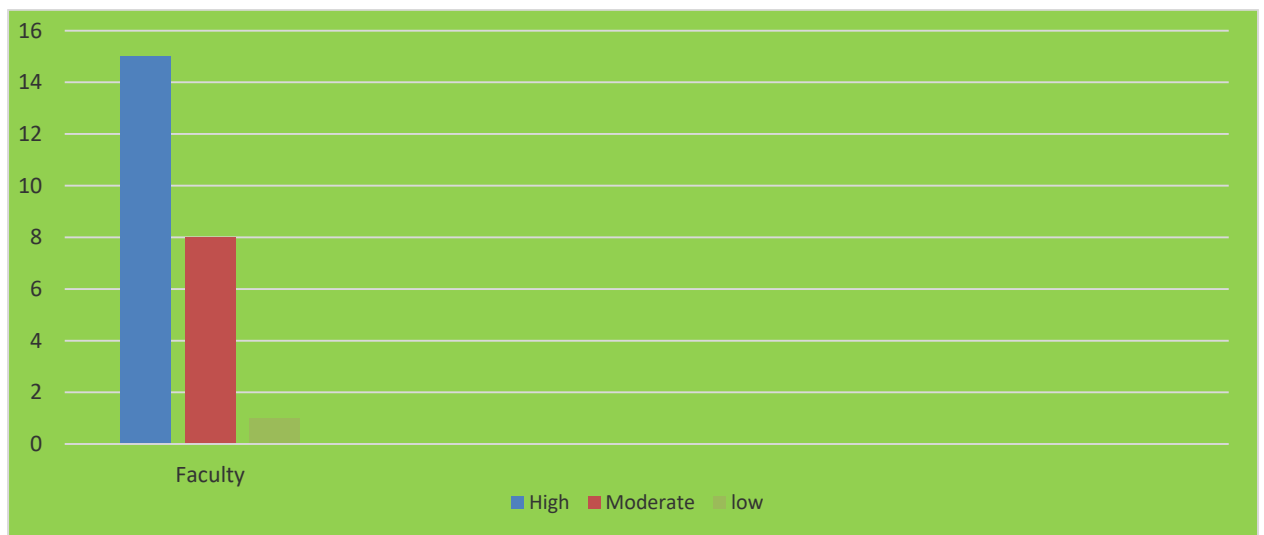
**Synchronization of theory and practical's**

	Faculty
Very good	14
Good	8
low	2



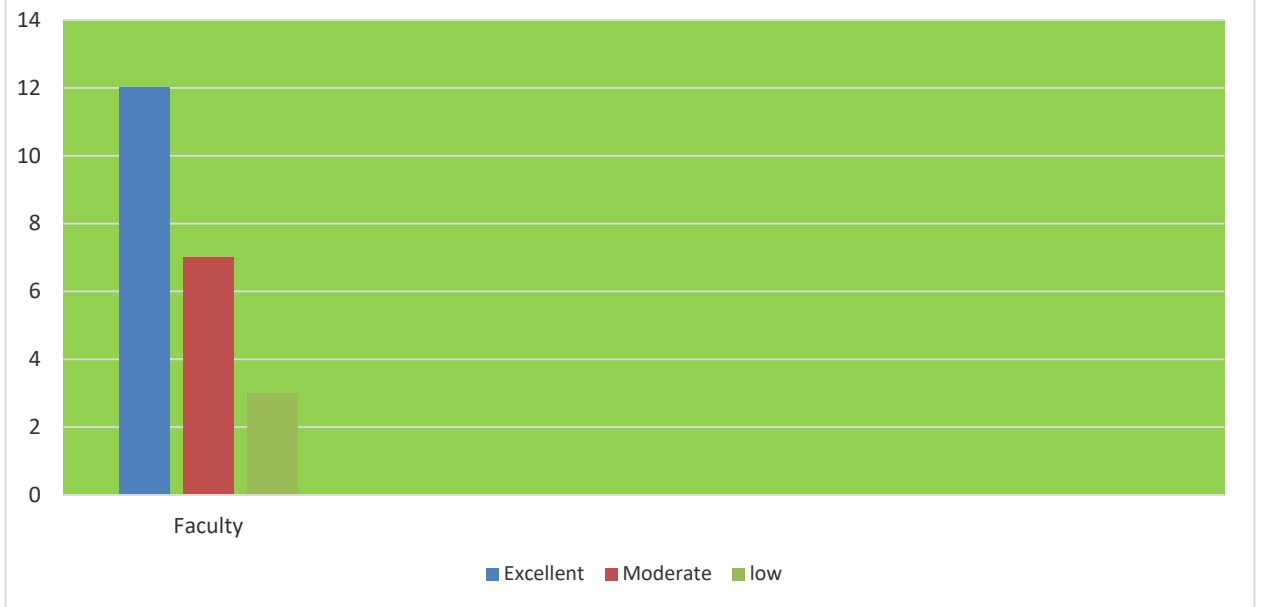
### Importance given to practicals

	Faculty
High	15
Moderate	8
low	1



### Maintenance of Lab equipments in working condition

	Faculty
Excellent	12
Moderate	7
Low	3



**Importance given to usage of library**

	<b>Faculty</b>
<b>Excellent</b>	<b>14</b>
<b>Moderate</b>	<b>9</b>
<b>Low</b>	<b>1</b>



### Usage of Technology/ Other teaching aids

	Faculty
Always	13
Often	6
Rare	3



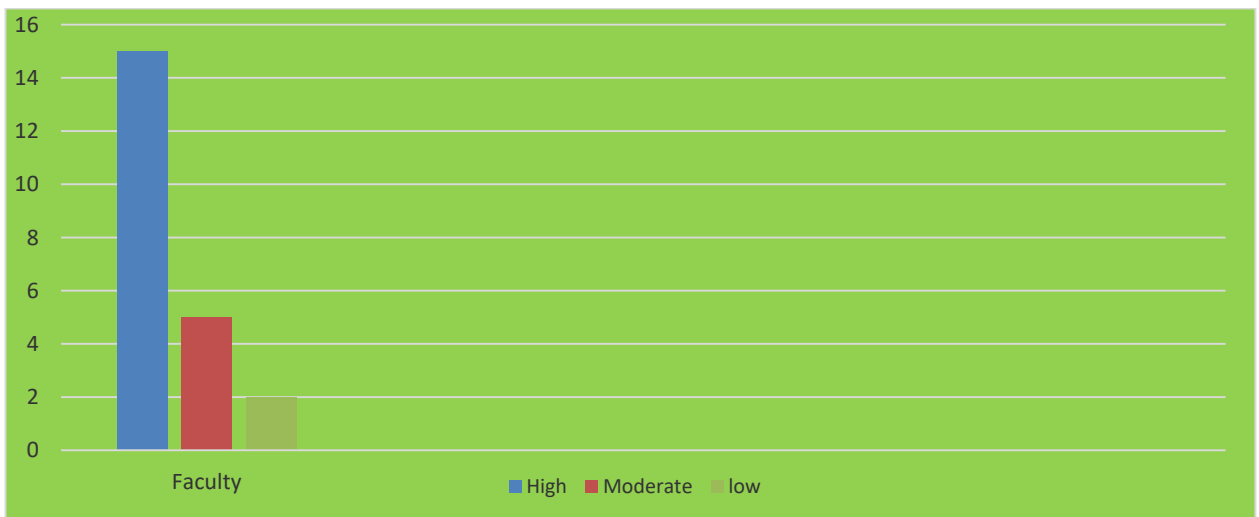
### Students follow up

	Faculty
Very good	11
Average	8
Poor	1



**Importance given for Punctuality, discipline, regularity, systematic work**

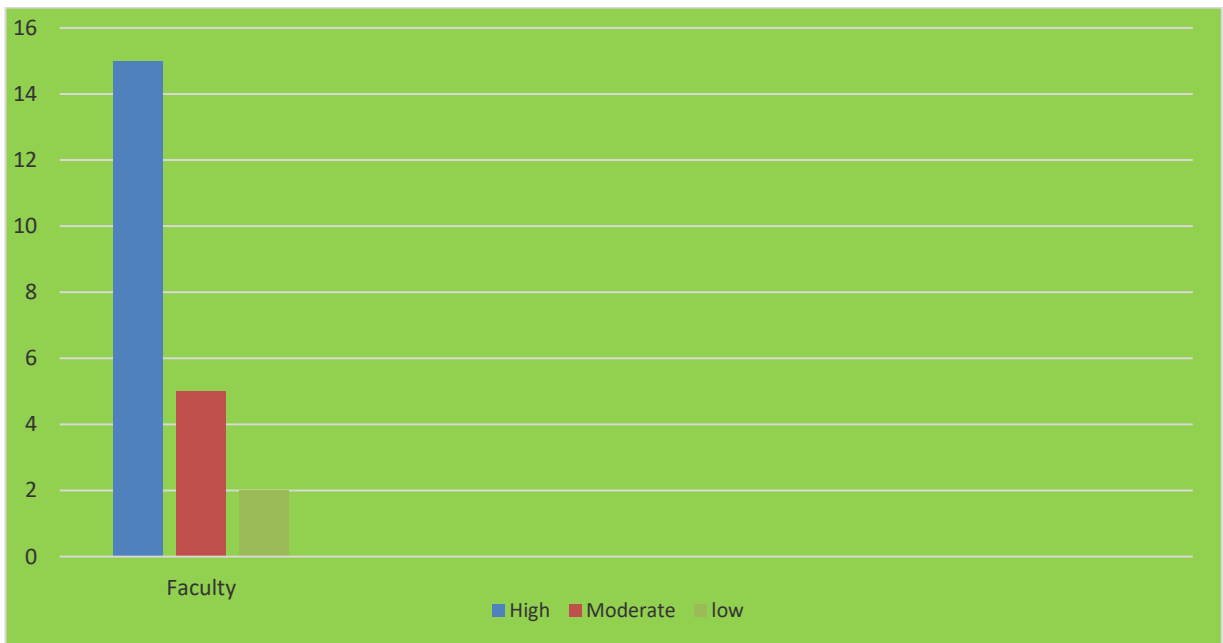
	Faculty
High	15
Moderate	5
low	2



**Importance given for the development of problem-solving skills and analytical skills**

	Faculty
High	12
Moderate	7
Low	3





**Opportunities given/available for the overall development**

	Faculty
<b>Very good</b>	<b>13</b>
<b>Average</b>	<b>6</b>
<b>Poor</b>	<b>1</b>

