



# SACRED HEART COLLEGE (AUTONOMOUS)

Tirupattur – 635 601, Tamil Nadu, S.India

Resi : (04179) 220103

College : (04179) 220553

Fax : (04179) 226423

Ready for  
Everv Good Work

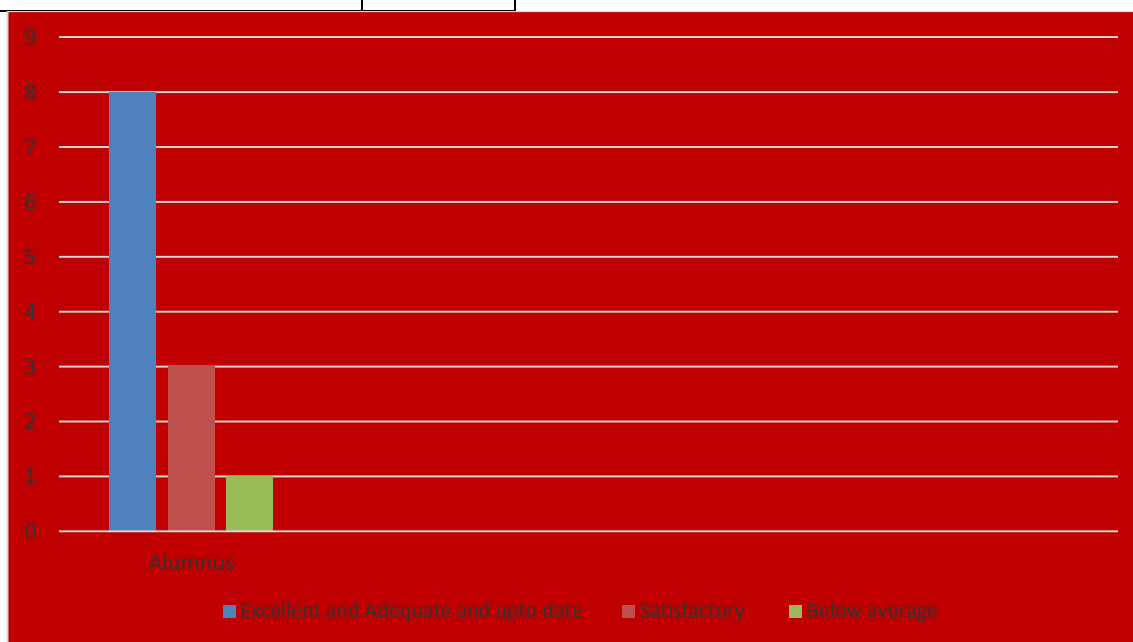
A Don Bosco Institution of Higher Education, Founded in 1951 \* Affiliated to Thiruvalluvar University, Vellore \* Autonomous since 1987

Accredited by NAAC (4<sup>th</sup> Cycle – under RAF) with CGPA of 3.31 / 4 at 'A+' Grade

## Curriculum Feedback PG – 2021 - 2022 Curriculum Feedback by Alumni for M. Sc. Chemistry program

### 1. Courses (papers or subjects)

	Alumnus
Excellent and Adequate and upto date	8
Satisfactory	3
Below average	1



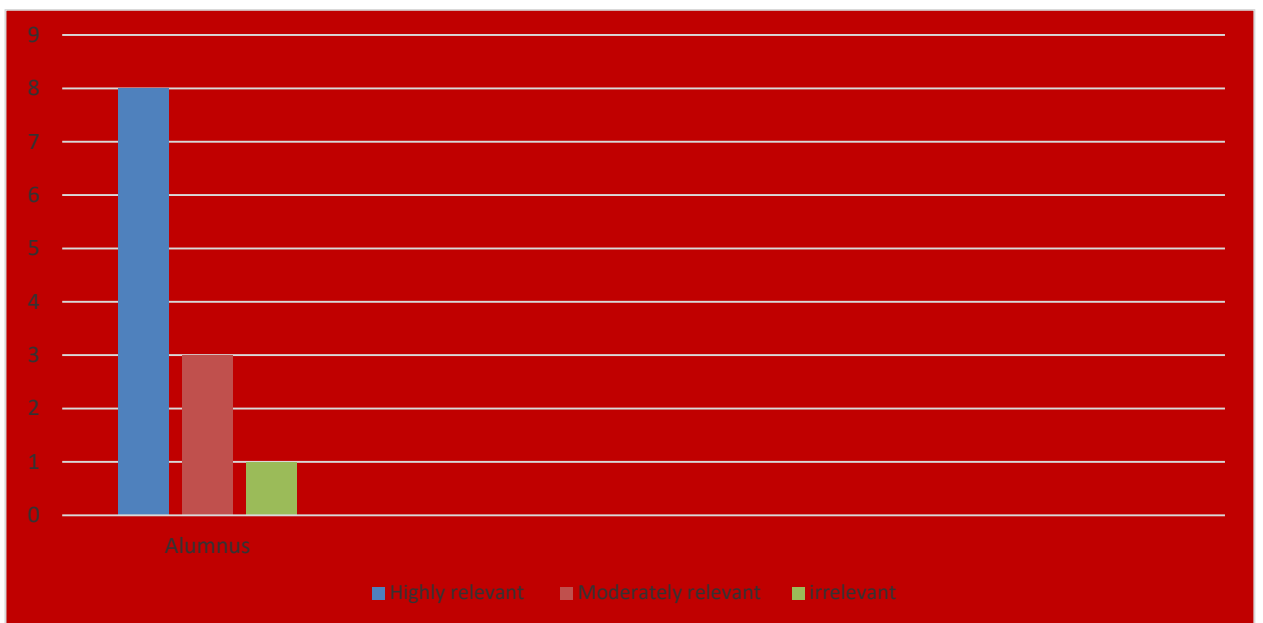
### 2. Content of the courses (papers or subjects)

	Alumnus
Excellent and Adequate and upto date	8
Satisfactory	4
Below average	0



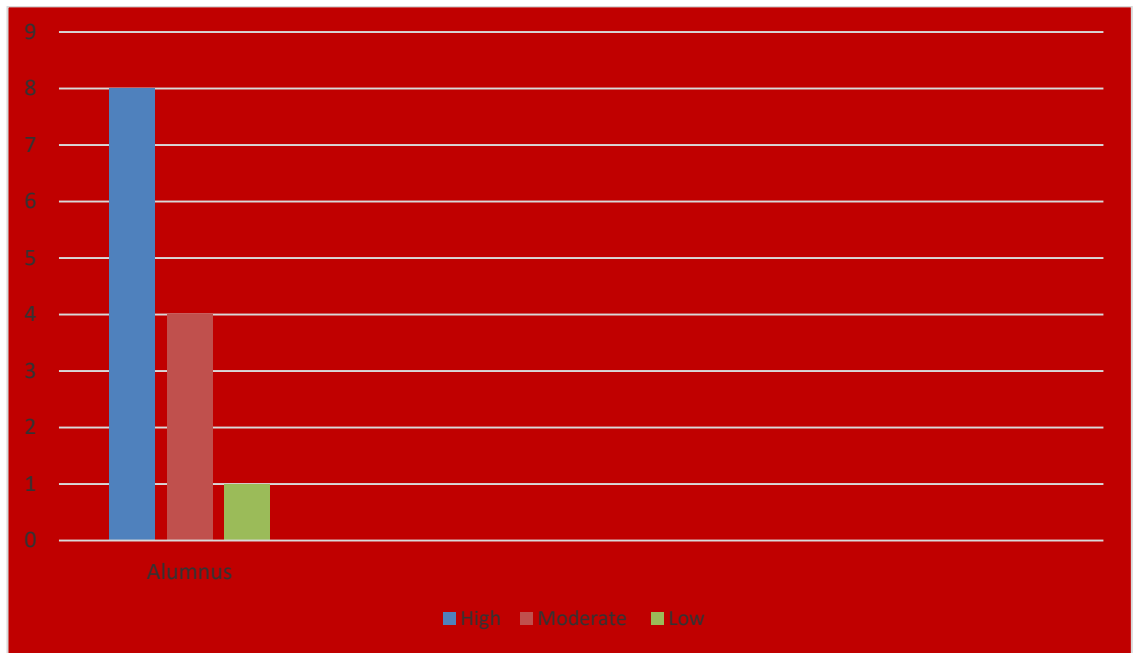
### 3. Relevance of the courses

	<b>Alumnus</b>
Highly relevant	<b>8</b>
Moderately relevant	<b>3</b>
Irrelevant	<b>1</b>



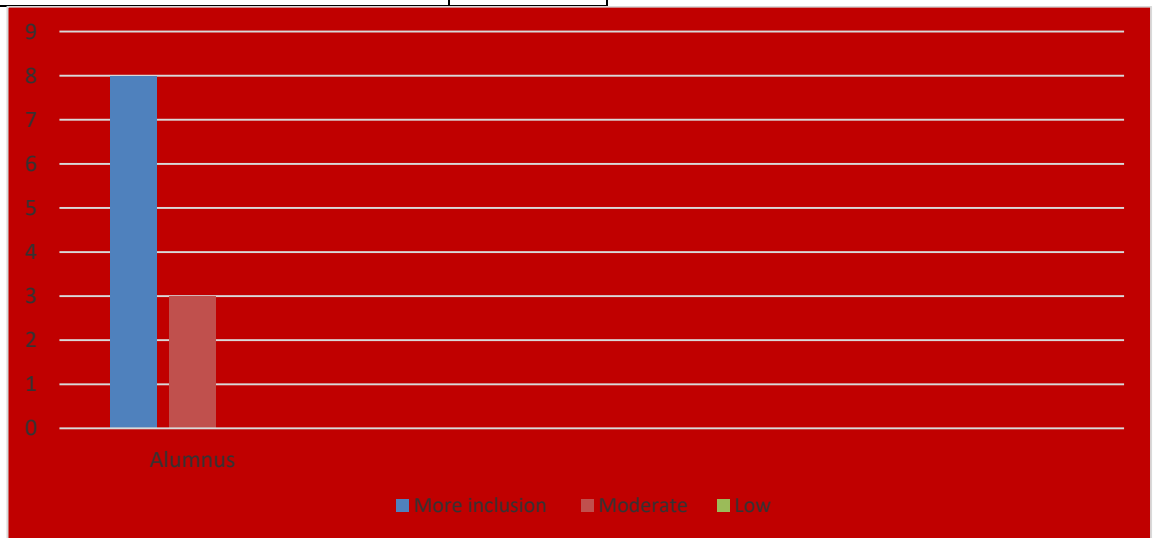
### 4. Sequence of the courses in the program

	<b>Alumnus</b>
<b>High</b>	<b>8</b>
<b>Moderate</b>	<b>4</b>
<b>Low</b>	<b>1</b>



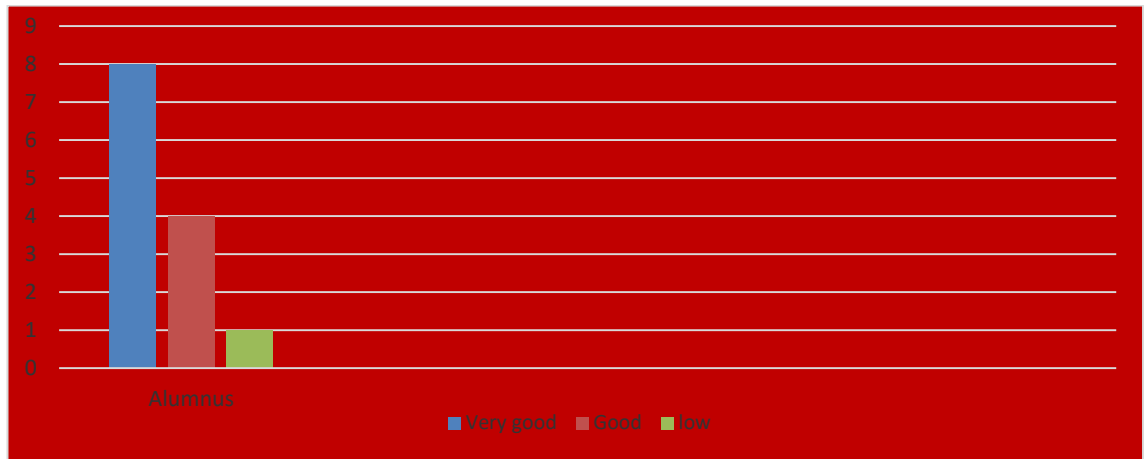
**5. Inclusion of new /current topics in the curriculum**

	<b>Alumnus</b>
<b>More inclusion</b>	<b>8</b>
<b>Moderate</b>	<b>3</b>
<b>Low</b>	<b>0</b>



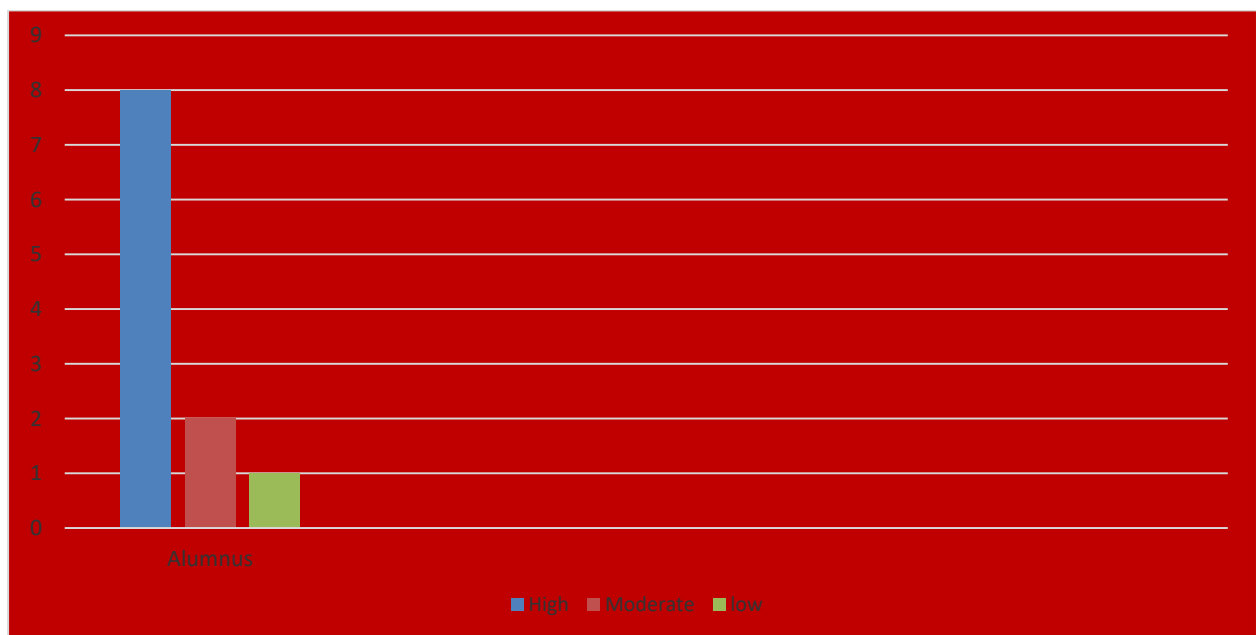
**6. Synchronization of theory and practical's**

	<b>Alumnus</b>
<b>Very good</b>	<b>8</b>
<b>Good</b>	<b>4</b>
<b>low</b>	<b>1</b>



**7. Importance given to practicals**

	<b>Alumnus</b>
<b>High</b>	<b>8</b>
<b>Moderate</b>	<b>2</b>
<b>low</b>	<b>1</b>



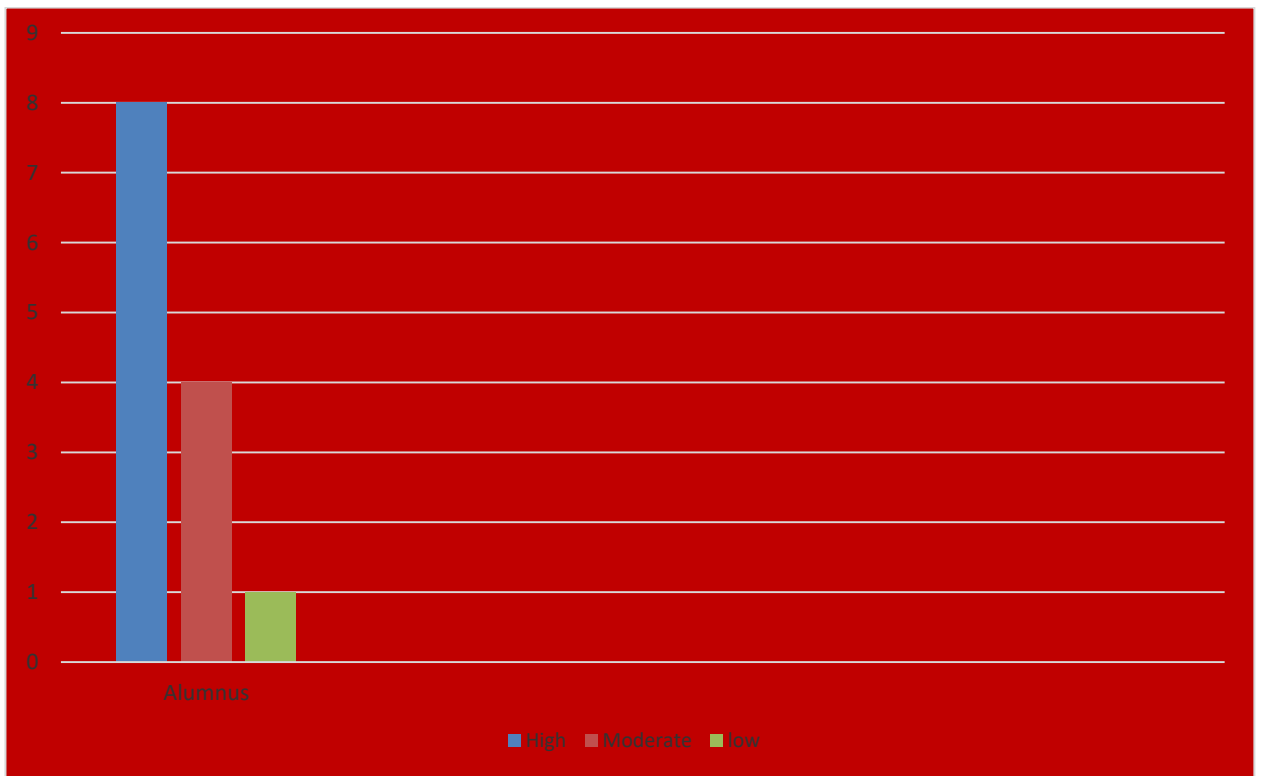
**8. Maintenance of Lab equipments in working condition**

	<b>Alumnus</b>
<b>Excellent</b>	<b>8</b>
<b>Moderate</b>	<b>2</b>
<b>Low</b>	<b>1</b>



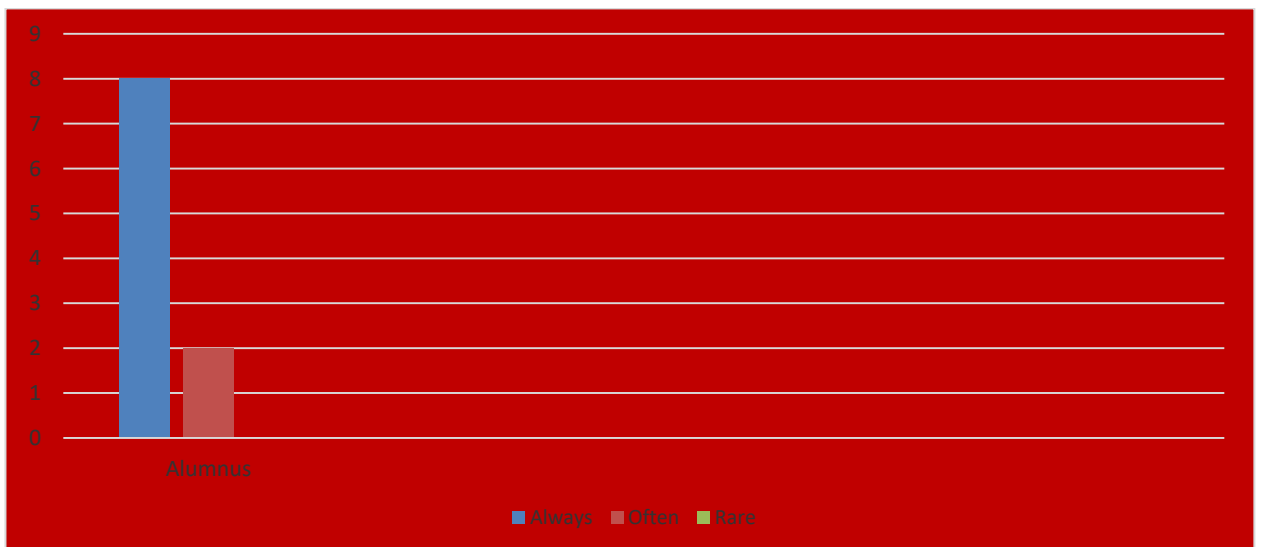
**9. Importance given to usage of library**

	<b>Alumnus</b>
<b>Excellent</b>	<b>8</b>
<b>Moderate</b>	<b>4</b>
<b>Low</b>	<b>1</b>



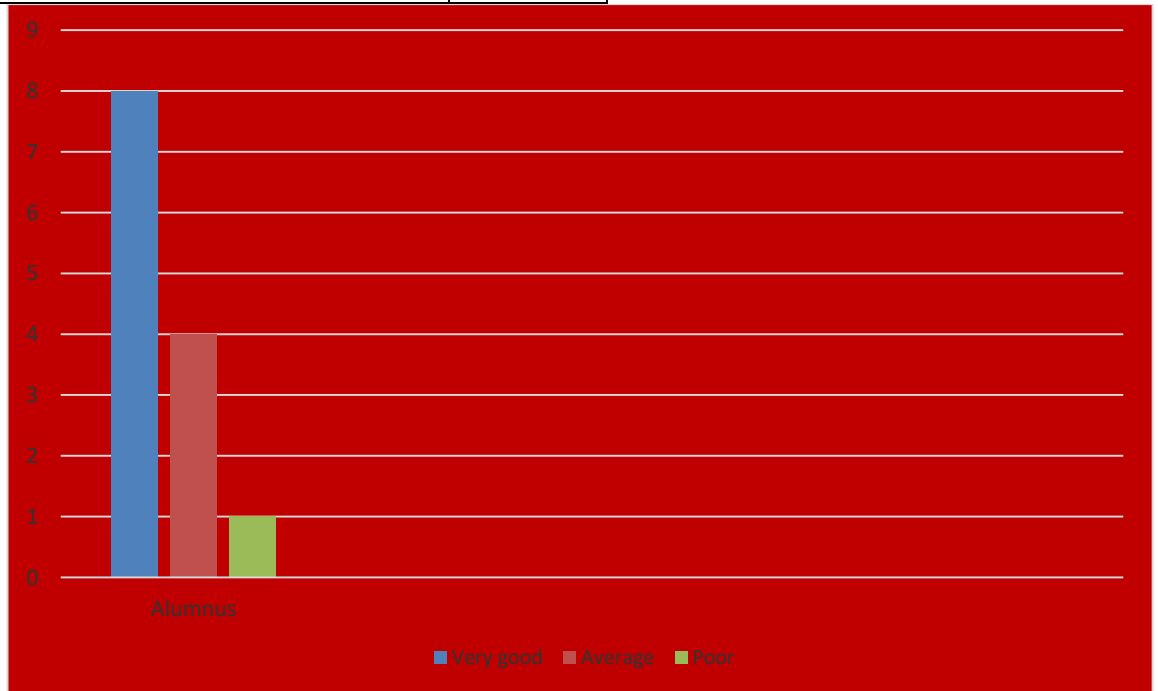
**10. Usage of Technology/ Other teaching aids**

	<b>Alumnus</b>
<b>Always</b>	<b>8</b>
<b>Often</b>	<b>2</b>
<b>Rare</b>	<b>0</b>



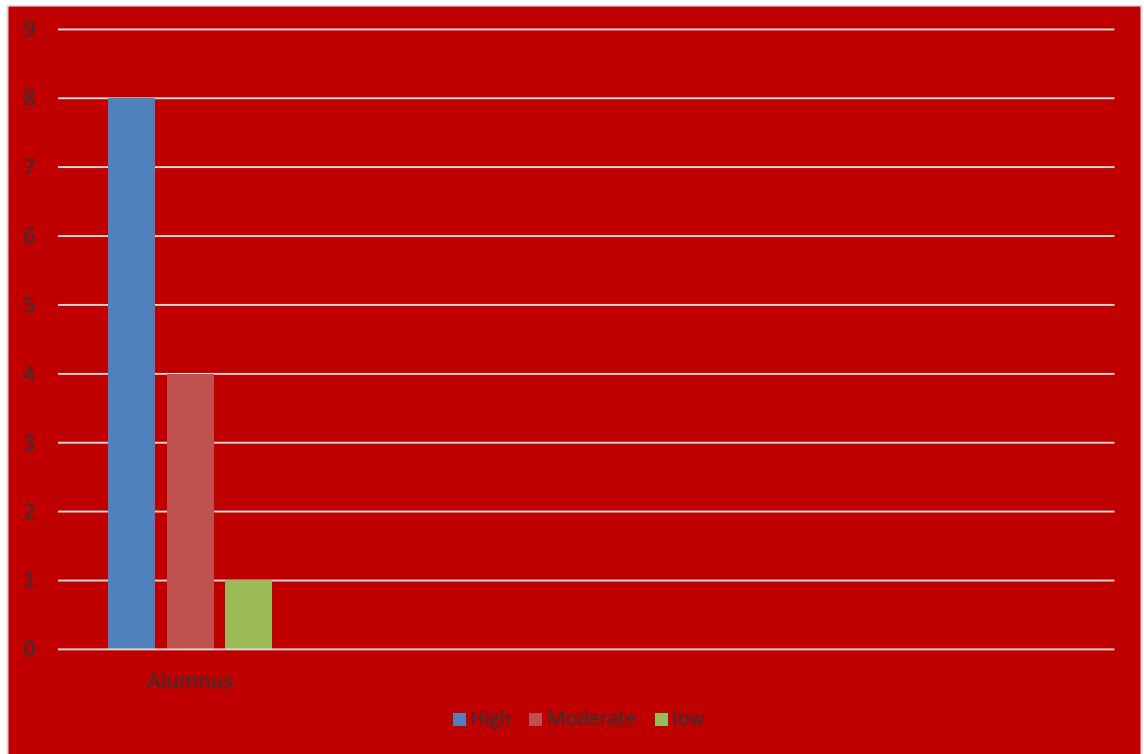
### 11. Students follow up

	Alumnus
Very good	8
Average	4
Poor	1



### 12. Importance given for Punctuality, discipline, regularity, systematic work

	Alumnus
High	8
Moderate	4
low	1



**13. Importance given for the development of problem-solving skills and analytical skills**

	<b>Alumnus</b>
<b>High</b>	<b>8</b>
<b>Moderate</b>	<b>3</b>
<b>Low</b>	<b>0</b>

