



SACRED HEART COLLEGE (AUTONOMOUS)

Tirupattur – 635 601, Tamil Nadu, S.India

Resi : (04179) 220103

College : (04179) 220553

Fax : (04179) 226423

Ready for
Every Good Work

A Don Bosco Institution of Higher Education, Founded in 1951 * Affiliated to Thiruvalluvar University, Vellore * Autonomous since 1987

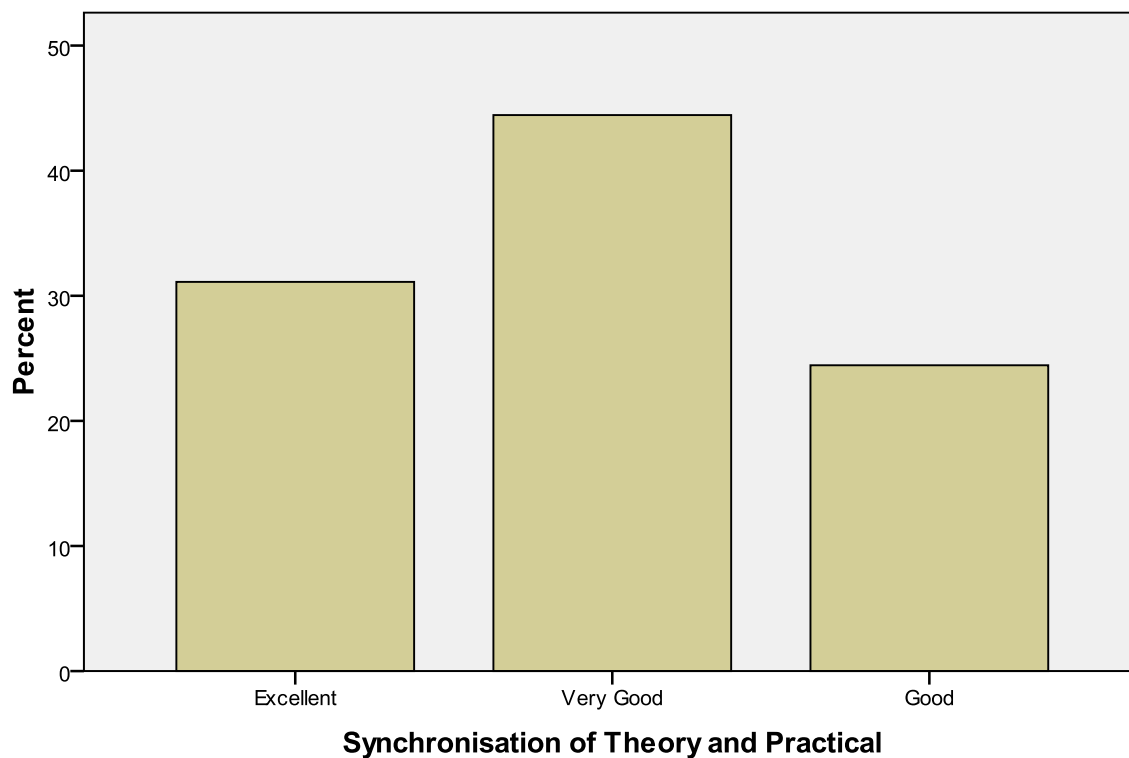
Accredited by NAAC (4th Cycle – under RAF) with CGPA of 3.31 / 4 at 'A+' Grade

Curriculum Feedback – M. Com Alumni Academic Year 2018-19

SYNCHRONIZATION OF THEORY AND PRACTICAL

Parameter	Frequency	Percent
Excellent	14	31.1
Very Good	20	44.4
Good	11	24.4
Total	45	100.0

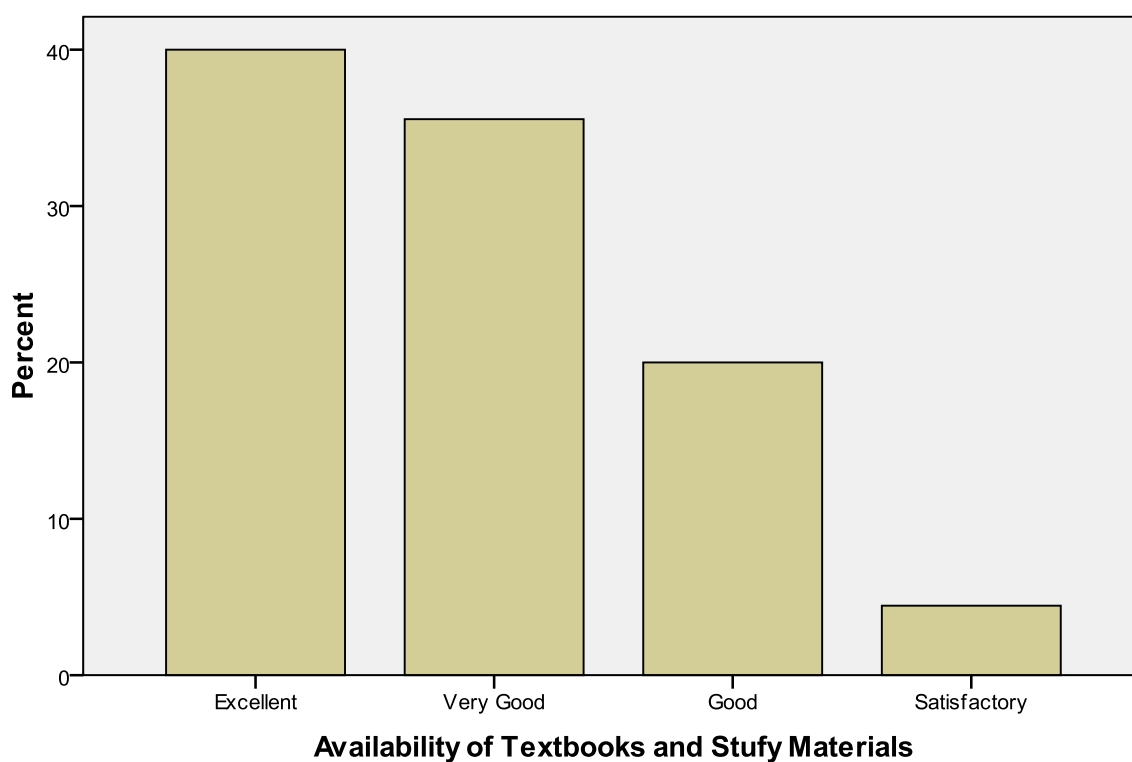
Synchronisation of Theory and Practical



AVAILABILITY OF TEXTBOOKS AND STUDY MATERIALS

Parameter	Frequency	Percent
Excellent	18	40.0
Very Good	16	35.6
Good	9	20.0
Satisfactory	2	4.4
Total	45	100.0

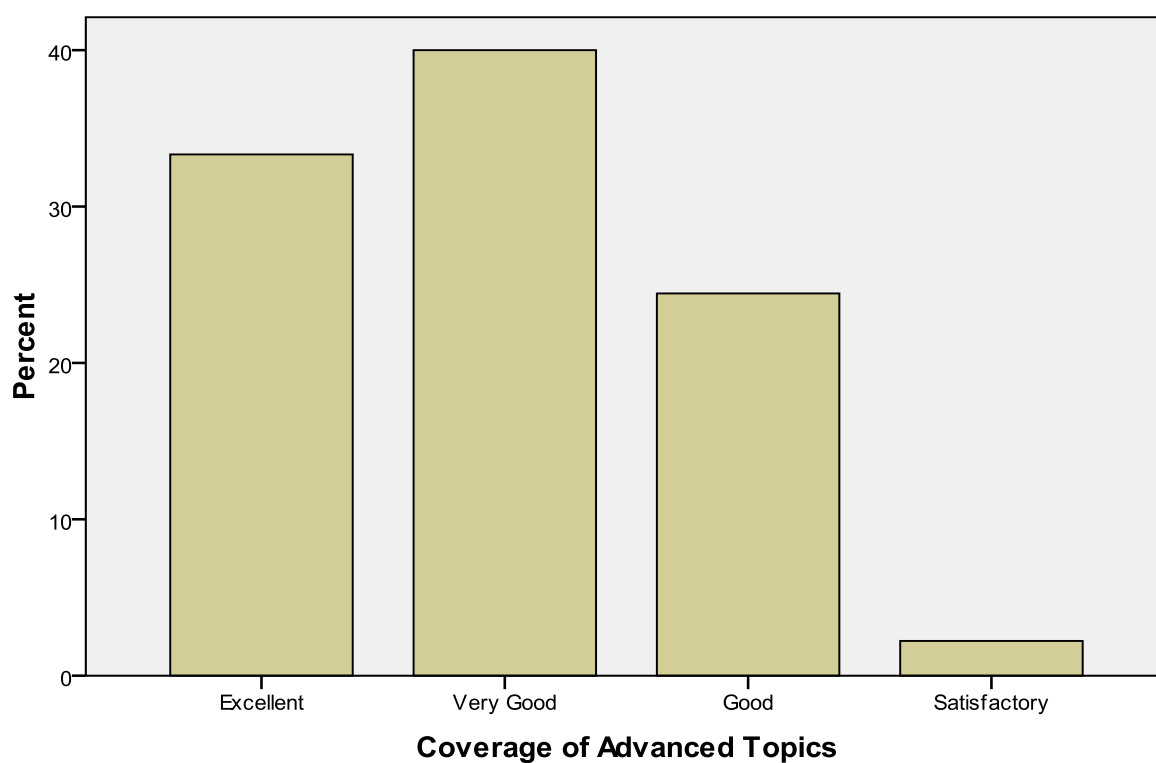
Availability of Textbooks and Study Materials



COVERAGE OF ADVANCED TOPICS

Parameter	Frequency	Percent
Excellent	15	33.3
Very Good	18	40.0
Good	11	24.4
Satisfactory	1	2.2
Total	45	100.0

Coverage of Advanced Topics



DOES THE COURSE SATISFY THE NEEDS?

Parameter	Frequency	Percent
-----------	-----------	---------

Excellent	15	33.3
Very Good	17	37.8
Good	11	24.4
Satisfactory	2	4.4
Total	45	100.0

Does the Course Satisfy the Needs

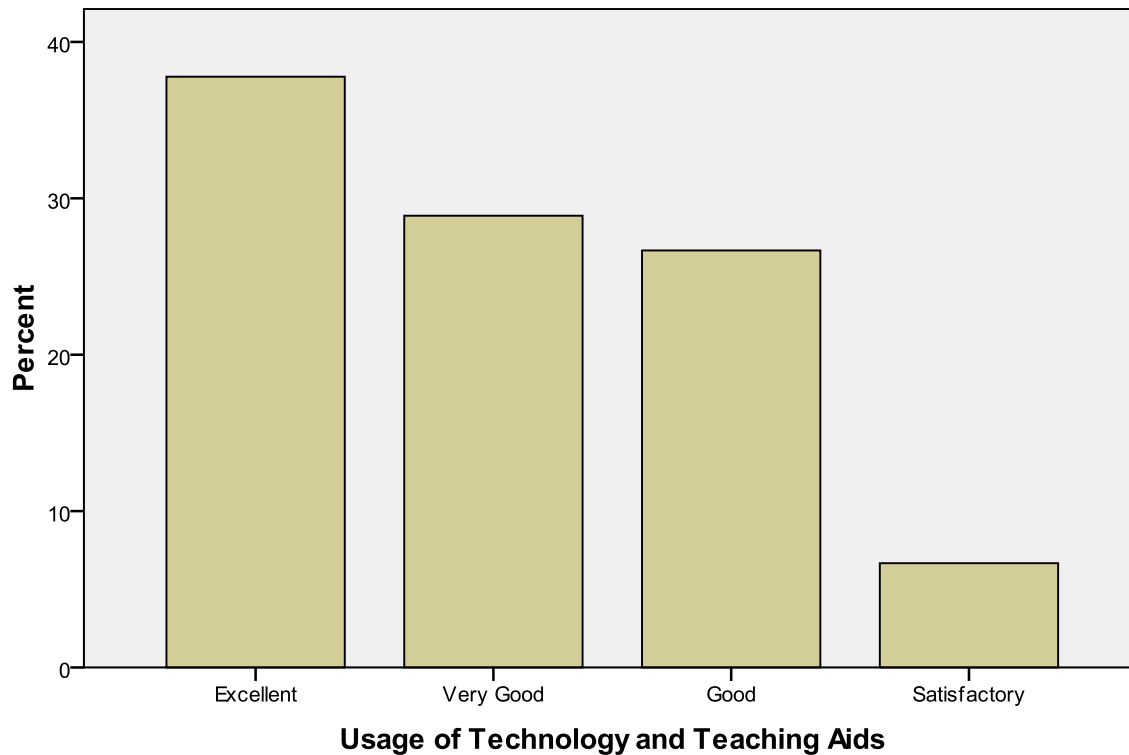


USAGE OF TECHNOLOGY AND TEACHING AIDS

Parameter	Frequency	Percent
Excellent	17	37.8
Very Good	13	28.9
Good	12	26.7

Satisfactory	3	6.7
Total	45	100.0

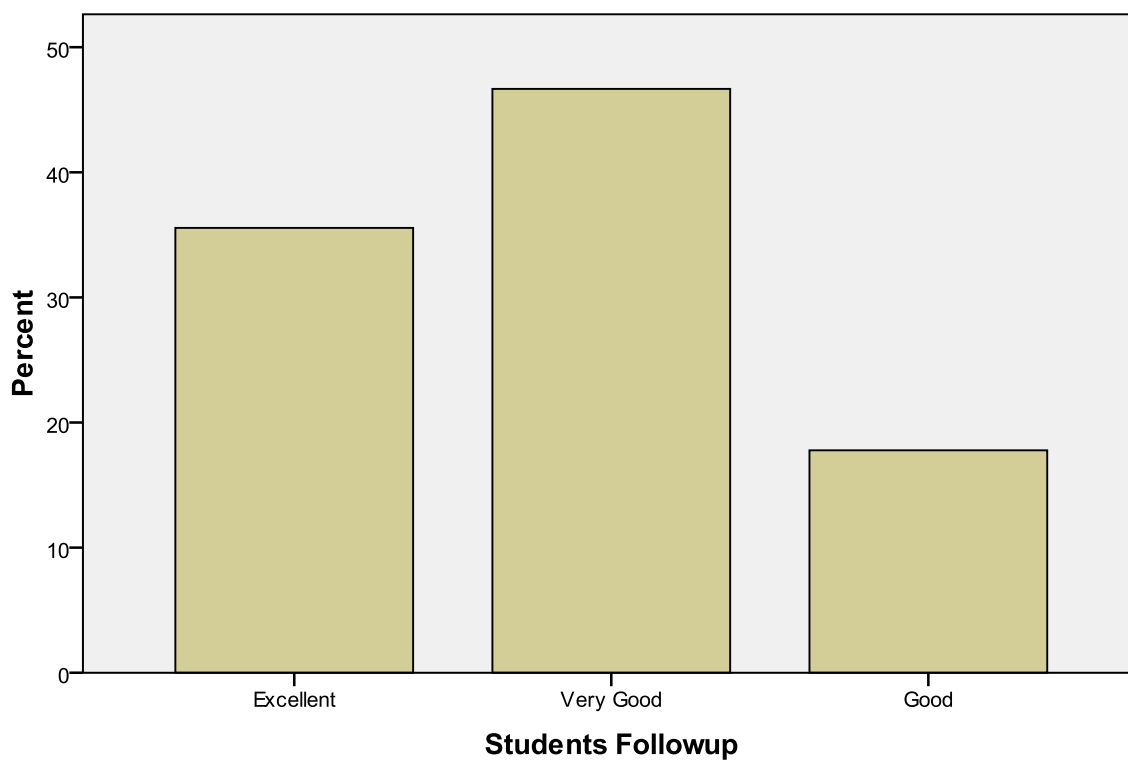
Usage of Technology and Teaching Aids



STUDENTS FOLLOW-UP

Parameter	Frequency	Percent
Excellent	16	35.6
Very Good	21	46.7
Good	8	17.8
Total	45	100.0

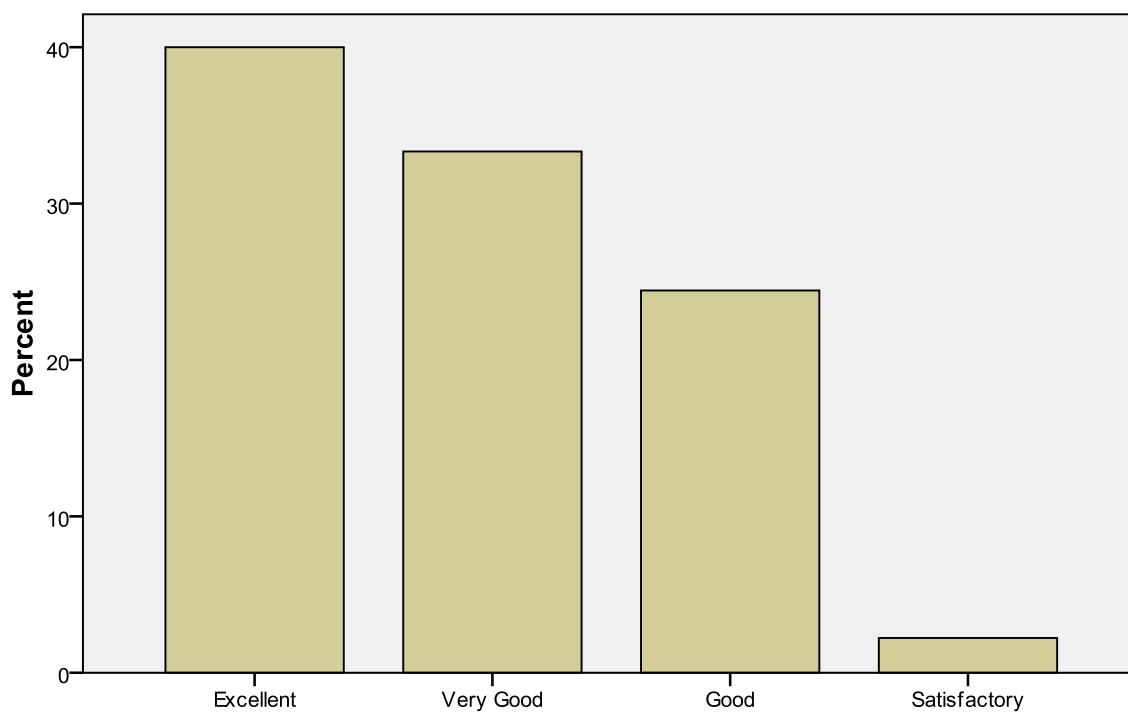
Students Followup



USEFULNESS GAINED BY STUDENTS IN CONDUCTING TESTS AND ASSIGNMENTS

Parameter	Frequency	Percent
Excellent	18	40.0
Very Good	15	33.3
Good	11	24.4
Satisfactory	1	2.2
Total	45	100.0

Usefulness Gained by Students in conducting Tests and Assignments



Usefulness Gained by Students in conducting Tests and Assignments

OVERALL RATING THE PROGRAMME OF STUDY

Parameter	Frequency	Percent
Excellent	17	37.8
Very Good	20	44.4
Good	7	15.6
Satisfactory	1	2.2
Total	45	100.0

Overall Rating the Programme of Study

